

This article is more than 9 months old

## Indonesia's daily Covid infections higher than India and Brazil

Health systems overwhelmed as Delta variant sweeps across south-east Asia

- [Coronavirus - latest updates](#)
- [See all our coronavirus coverage](#)

LESSON LEARNED FROM PANDEMIC COVID: Are We Getting Closer to End?

Where is COVID heading next?

The New York Times

Pandemic > Covid-19 Updates Map and Cases Nearing 1 Million U.S. Deaths How Often

### *The Pandemic Has a New Epicenter: Indonesia*

The suffering that ravaged places like India and Brazil — with deaths soaring, hospitals overwhelmed and oxygen running out — has reached Southeast Asia.



# Covid-19 shows why poor risk communication and leadership must never happen again

**MEDIA INDONESIA**  
REKRENSI BANGSA

**Kasus Covid-19 di Indonesia**  
Dinilai Masih Buruk

**Menumbuhkan Harapan di Hari-Hari Mencekam**

PHOTO & TEXT: MIMBARIVANTO

Media Indonesia is a leading Indonesian newspaper. The cover features a photograph of medical staff in full protective gear attending to a patient in a hospital ward. The headline discusses the COVID-19 situation in Indonesia, noting that it remains poor. The sub-headline is 'Menumbuhkan Harapan di Hari-Hari Mencekam' (Nurturing Hope in Dismal Days). The author is identified as PHOTO & TEXT: MIMBARIVANTO.

**Tribun Jogja**  
SPIRIT BARU DI-YATJENG

**DARURAT OKSIGEN**  
Pulau Pasien Covid-19 di DIY Menunggu Dunia

TRIBUN JOGJA  
Rp 2.000

The cover of TRIBUN JOGJA features a dark, dramatic image of hands holding a medical device, possibly an oxygen cannula. The headline is 'DARURAT OKSIGEN' (Oxygen Emergency) and the sub-headline is 'Pulau Pasien Covid-19 di DIY Menunggu Dunia' (Island of COVID-19 Patients in DIY Waiting for the World). The price is listed as Rp 2.000.

**PANIC BUYING AKIBAT VIRUS CORONA**

ERICK THORIB  
Member Editor

"Sok aman Rakyat jangan panik. Kita harus beres-beres."

"Masyarakat belanjalah sesuai kebutuhan. Panjajal jangan nabikin harga."

AGUS SUPARMANTO  
Mantan Perdagang

"Tindak tegas pihak tak bertanggung jawab seperti menimbun masker."

JOKO WIDODO  
Presiden RI

"Kebutuhan masyarakat terpenuhi dengan baik."

ROY M HANSEY  
Kolumnis  
Pengusaha Ritel Indonesia (Griens)

The infographic shows a shopping cart filled with boxes of hand sanitizer, masks, and food. It includes quotes from various figures regarding the panic buying of supplies during the COVID-19 pandemic.

**KORAN TEMPO**  
SENIN, 5 JULI 2021

**SOS FASILITAS KESEHATAN**

**ENTRANCE**

**-BISNIS BALIK KANAN PEMULIHAN EKONOMI**

The cover of KORAN TEMPO features an illustration of a person in a white protective suit rolling a mat. The headline is 'SOS FASILITAS KESEHATAN' (Emergency Health Facilities). The sub-headline is 'ENTRANCE'. At the bottom, there is a yellow circle with the text '-BISNIS BALIK KANAN PEMULIHAN EKONOMI' (Right-side Business for Economic Recovery).

**The Jakarta Post**  
MONDAY, JULY 5, 2021

**JAVA'S HEALTH SYSTEM PARALYZED**  
Patients suffer at home as hospitals near capacity, many die without getting help

**SANG IBU MENINGGAL TERPAPAR COVID - 19, 3 ANAK YATIM ISOLASI DI RUMAH SEHAT**

The cover of The Jakarta Post features a photograph of a crowded hospital ward with patients lying on beds. The headline is 'JAVA'S HEALTH SYSTEM PARALYZED' and the sub-headline is 'Patients suffer at home as hospitals near capacity, many die without getting help'. A large red arrow points to a sub-headline: 'SANG IBU MENINGGAL TERPAPAR COVID - 19, 3 ANAK YATIM ISOLASI DI RUMAH SEHAT' (Mother Died of COVID-19, 3 Orphan Children Isolated in Home Care).

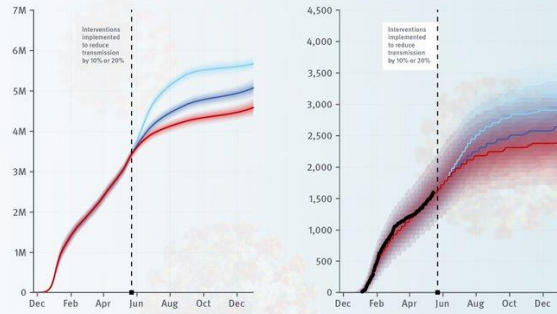
# A SWOT ANALYSIS OF INDONESIA'S COVID-19 MANAGEMENT



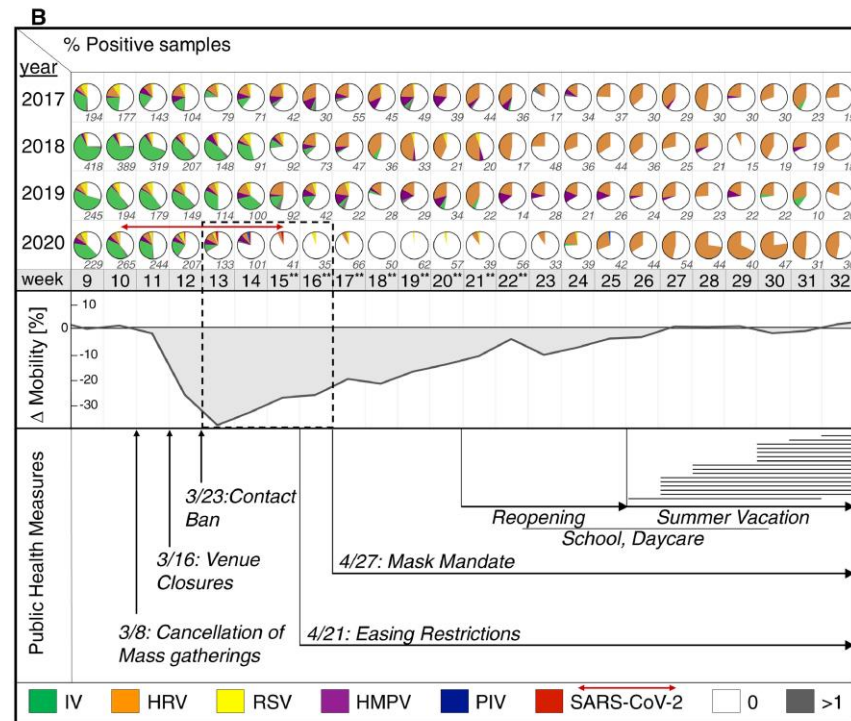
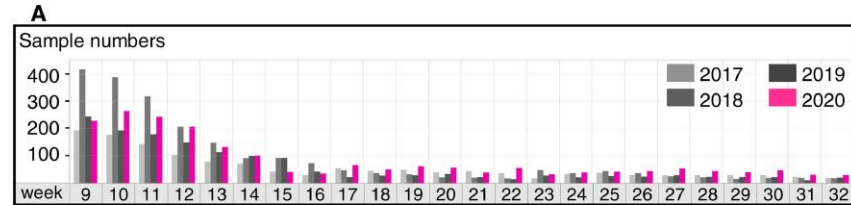


**COVID-19 is now a leading cause of death in Australia, but small reductions in transmission could make a big difference.**

[Read Opinion Piece](#)



# GLOBAL RESPIRATORY VIRUS SURVEILLANCE



**C**

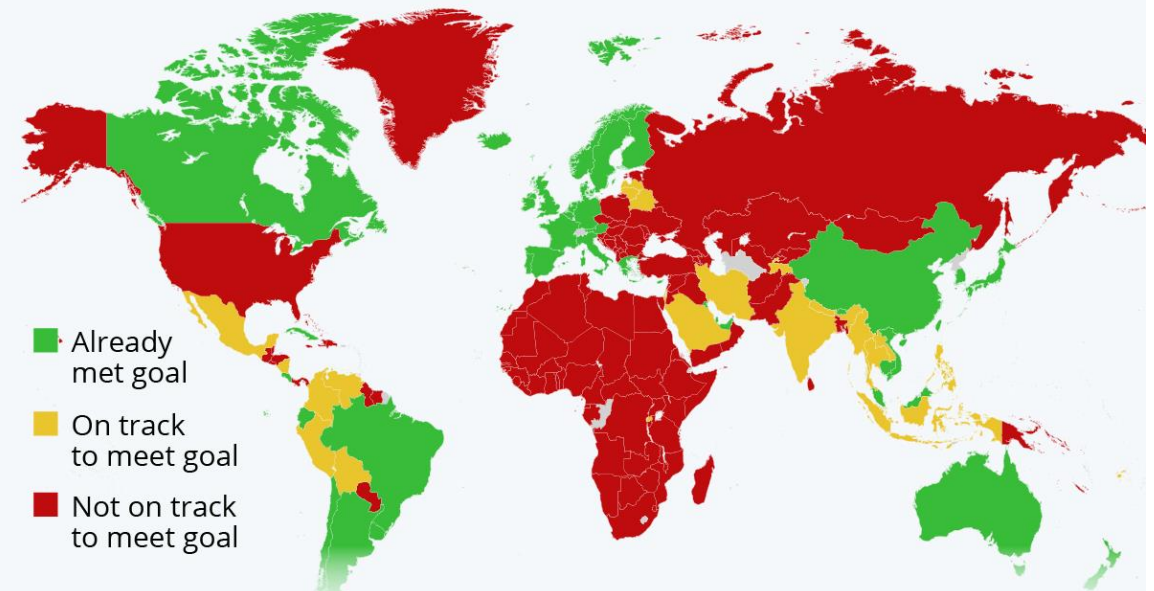
% Rhinovirus positive samples

Age (years)	week 9-10	week 11-12	week 13-14	week 15-16	week 17-18	week 19-20	week 21-22	week 23-24	week 25-26	week 27-28	week 29-30	week 31-32
> 60	9%	5%	3%	0%	0%	0%	8%	0%	20%	0%	50%	50%
35-60	8%	5%	4%	0%	0%	0%	0%	13%	46%	50%	50%	
16-34	5%	10%	10%	0%	7%	0%	0%	18%	29%	83%	67%	
5-15	4%	4%	9%	0%	3%	0%	0%	23%	21%	66%	75%	27%
< 4	8%	14%	19%	8%	5%	0%	5%	26%	44%	64%	75%	53%

# GLOBAL LANDSCAPE IMMUNITY

## 122 Countries on Track to Miss Covid-19 Vaccine Goal

Global progress towards the WHO goal of having 70% of the population fully vaccinated by mid-2022\* (as of Feb. 3, 2022)



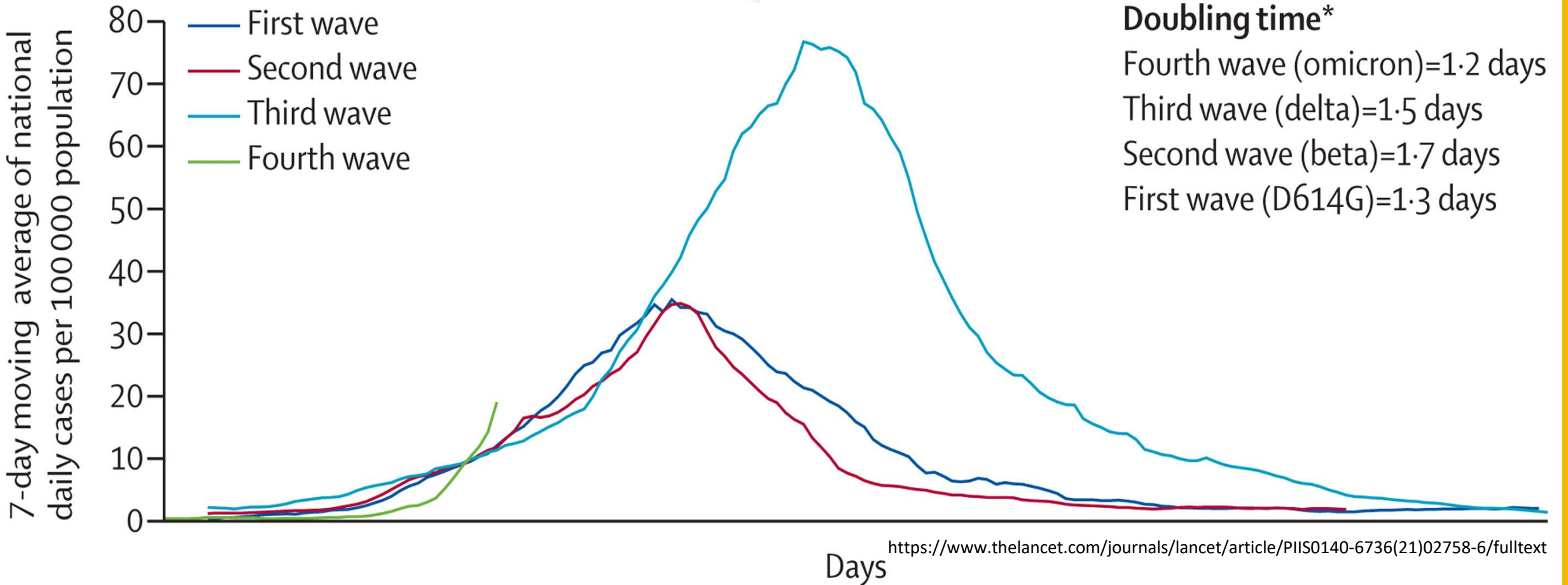
\* projections based on each country's current vaccination coverage and the average rate of new vaccinations over the past 14 days

Source: Our World in Data



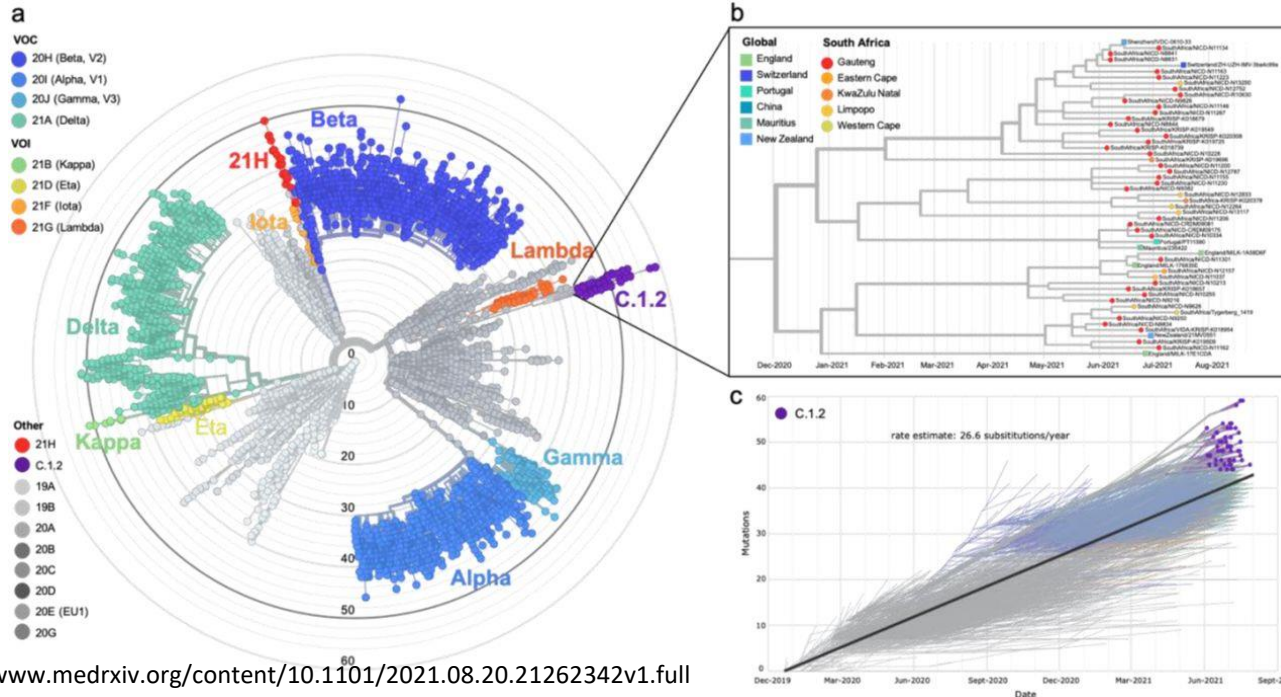
statista

# GLOBAL TREN ON COVID WAVE

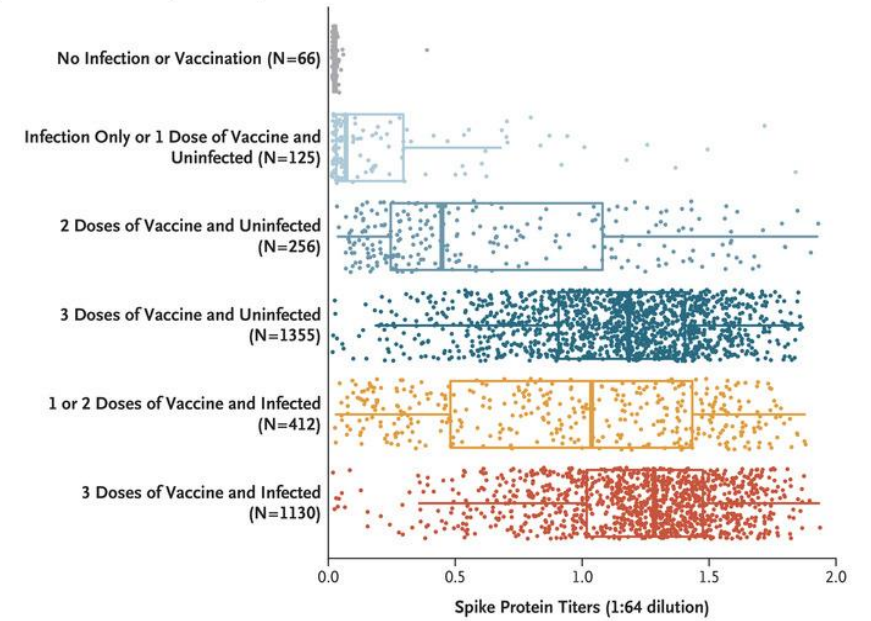




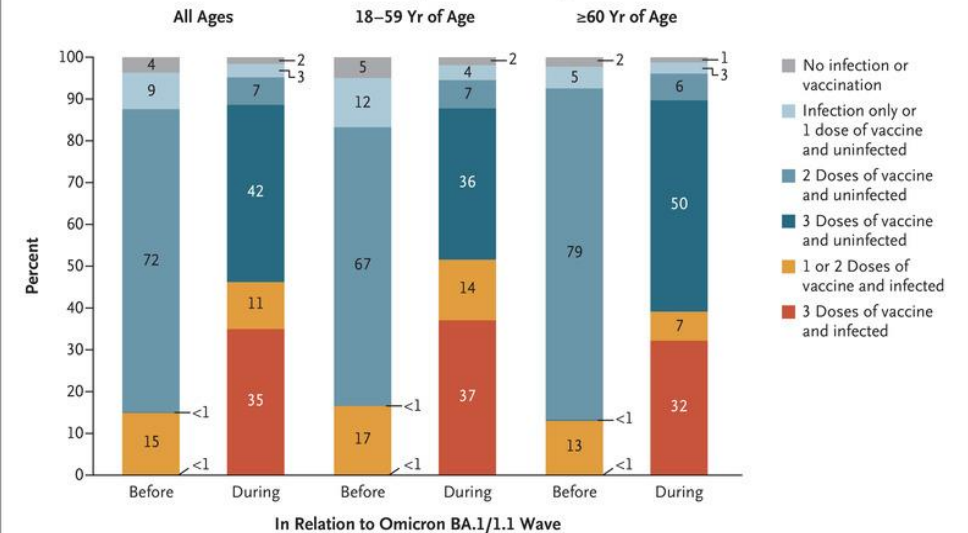
# GLOBAL TREN ON COVID WAVE & VARIANT



**A** Spike Protein Titers for IgG Antibody



**B** Cumulative Incidence of Infection before and during the Omicron BA.1/1.1 Wave



<https://www.nejm.org/doi/full/10.1056/NEJMc2202879>



## *Merck Will Share Formula for Its Covid Pill With Poor Countries*

The company announced a licensing deal that will allow the drug, molnupiravir, to be made and sold cheaply in 105 developing nations.

Gift this article    132



### **Tested positive for Covid and at high risk? How to get antiviral pills**

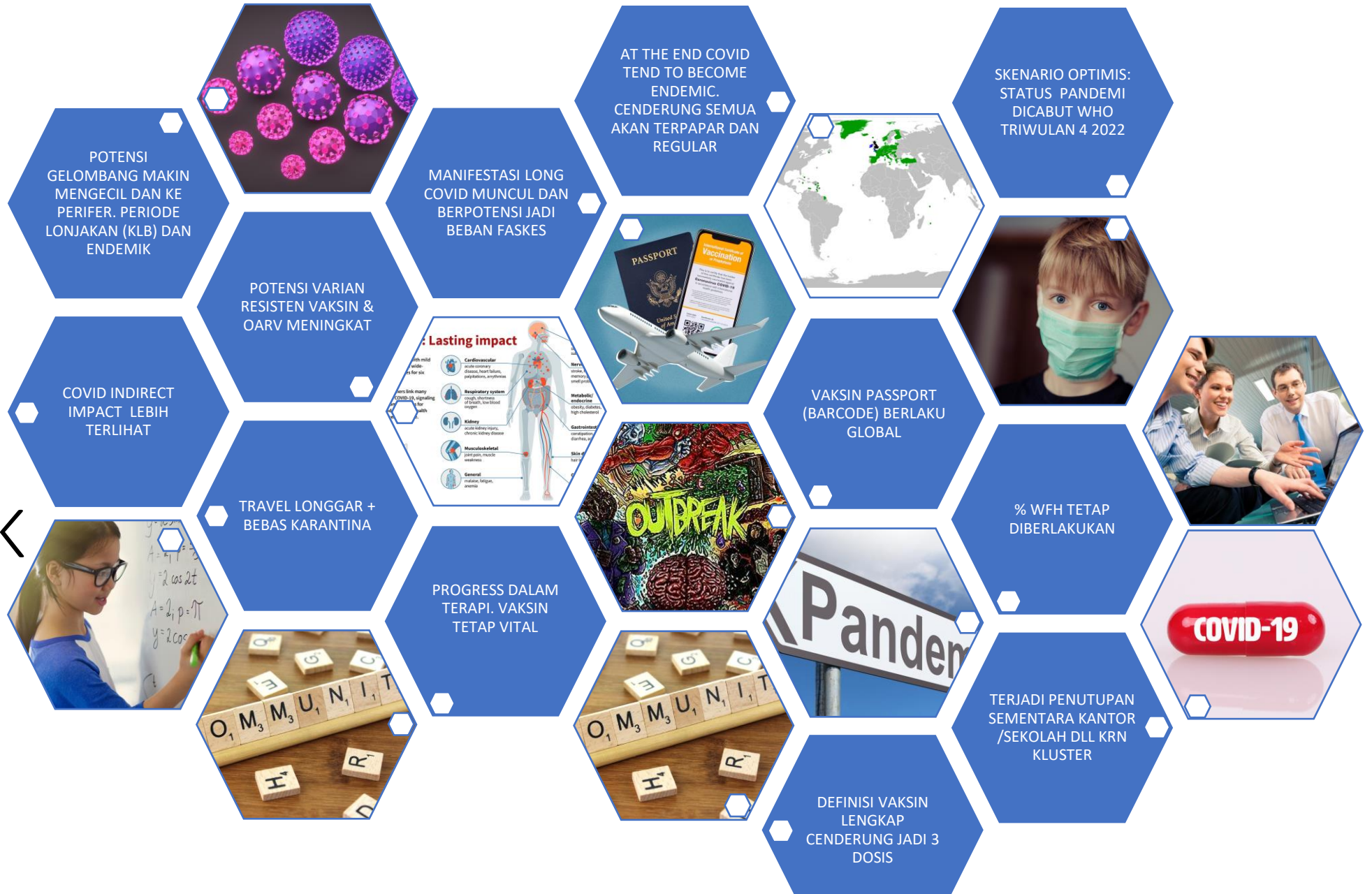
The drugs against Covid are in short supply and restricted to people at the highest risk of severe disease.



# DRUGS AND TREATMENT



# COVID OUTLOOK





## ENDEMIC



## EPIDEMIC



## PANDEMIC

### LEVEL SPREAD OF THE DISEASES

- An endemic disease is restricted to a particular region or area and is constantly present but at manageable levels. Endemic diseases often settle into more predictable and stable patterns.<sup>2</sup> For example, malaria is considered endemic in certain regions. It's a "dynamic equilibrium,"
- An endemic disease becomes an epidemic when the number of people who are infected rises above levels that would be expected. Epidemics are also largely restricted to certain geographic regions or countries.
- A pandemic, on the other hand, occurs when an epidemic affects many more people and spreads across multiple countries or even entire continents. In a pandemic, the rate at which people become infected by a particular virus is exponential—ie, a growing number of people are infected over a measure of time (eg, every day, week, month, etc).



# Lessons learned from the management of the coronavirus pandemic

- The world was unprepared for pandemic. We are ill-prepared to prevent the next pandemic.
- Successful responses hinge on decisive leadership at global and national level
- We need unified responses to pandemics rather than diverse disconnected strategies
- Global solidarity is the only way to win the war against COVID-19, → equity, cooperation and collaboration
- We need to test the responsiveness and resilience of health systems and make changes and improvements based on the results

# CONCLUSION

- Although the COVID-19 response is ongoing and contexts are constantly evolving, how countries respond to pandemics is ultimately dependent on how resilient their health systems are, with effective response required to control the immediate outbreak and mitigate downstream health effects.
- We cannot keep jumping from one epidemic to the next while ignoring the political will that is required to invest in the foundations of health for all.

MEDIA  
INDONESIA

WAWANCARA

MINGGU, 24 JANUARI 2021

“Ancaman pandemi ke depan akan semakin sering. Dalam 20 tahun terakhir saya menyaksikan hampir setiap lima tahun ada pandemi atau epidemi.”

**Dicky Budiman**  
Epidemiolog Universitas Griffith, Australia

Wawancara | Hlm 6



DUTA





**TERIMA KASIH**

